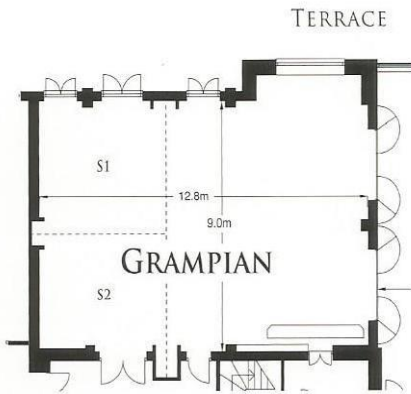
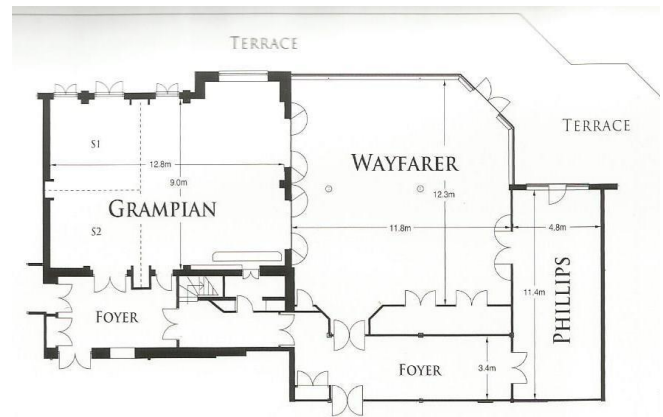
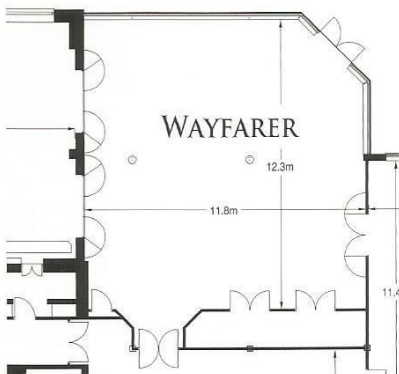


The Wintergreen Suites



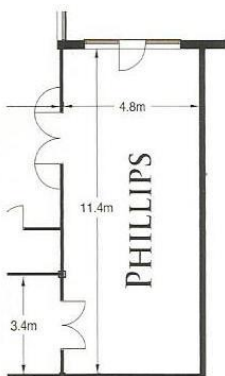
Grampian
 12.8m x 9m, ceiling 2.65m. Dividable into two rooms or a single conference room plus two syndicate rooms, S1 & S2. Links to Wayfarer. Doors to terrace.

<i>Style</i>	<i>People</i>
Boardroom	48
Theatre	140
Banqueting	110
Reception	180



Wayfarer
 11.8m x 12.3m, ceiling 2.68m. Including conservatory with tower view and links to Phillips and Grampian. Doors to terrace. Air conditioning.

<i>Style</i>	<i>People</i>
Boardroom	38
Theatre	200
Banqueting	140
Reception	250



Phillips
 11.4 x 4.8m, ceiling 2.68m. Links to Wayfarer. Door to terrace. Air conditioning.

<i>Style</i>	<i>People</i>
Boardroom	30
Theatre	70
Banqueting	36
Reception	80